



SHARON MEMORIAL PARK & Arboretum

Sharon Memorial Park & Arboretum has been awarded the Level 1 Arboretum Accreditation.

We invite you to come join us for a walk on our self-guided Arboretum tour and enjoy the beauty of our land.

As you move along the tour as shown on the enclosed map, you will find that each of the designated trees and woody plants has a tag with its name, native origin, and a QR code. If you scan that QR code, it will redirect you to a detailed website for information on that species.

ENJOY!

SHARON MEMORIAL PARK & Arboretum

Dedham Street, Sharon, MA 02067

781-828-7216

www.sharonmemorial.com

info@sharonmemorial.com

Visitors to the park do so at their own risk.



SHARON MEMORIAL PARK & Arboretum

ARBORETUM TOUR

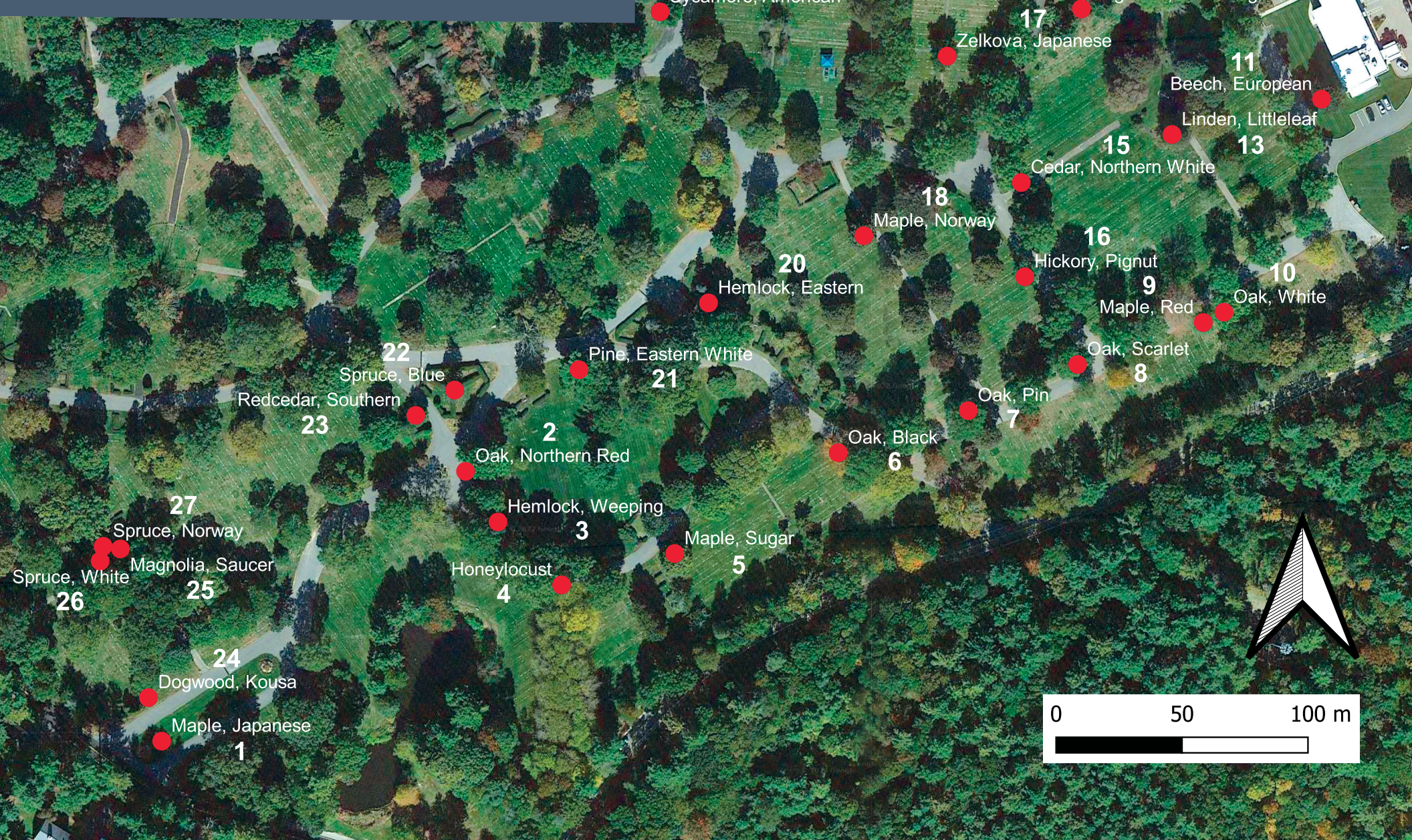


*Serving the
Jewish Community
since 1948*



SHARON MEMORIAL PARK & Arboretum

Serving the Jewish Community – from generation to generation



- 1 Maple, Japanese
- 2 Oak, Northern Red
- 3 Hemlock, Weeping
- 4 Honeylocust
- 5 Maple, Sugar
- 6 Oak, Black
- 7 Oak, Pin
- 8 Oak, Scarlet
- 9 Maple, Red
- 10 Oak, White
- 11 Beech, European
- 12 Pine, Red
- 13 Linden, Littleleaf
- 14 Dogwood, Flowering
- 15 Cedar, Northern White
- 16 Hickory, Pignut
- 17 Zelkova, Japanese
- 18 Maple, Norway
- 19 Sycamore, American
- 20 Hemlock, Eastern
- 21 Pine, Eastern White
- 22 Spruce, Blue
- 23 Redcedar, Southern
- 24 Dogwood, Kousa
- 25 Magnolia, Saucer
- 26 Spruce, White
- 27 Spruce, Norway

