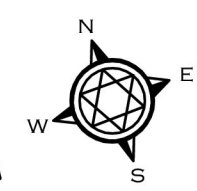
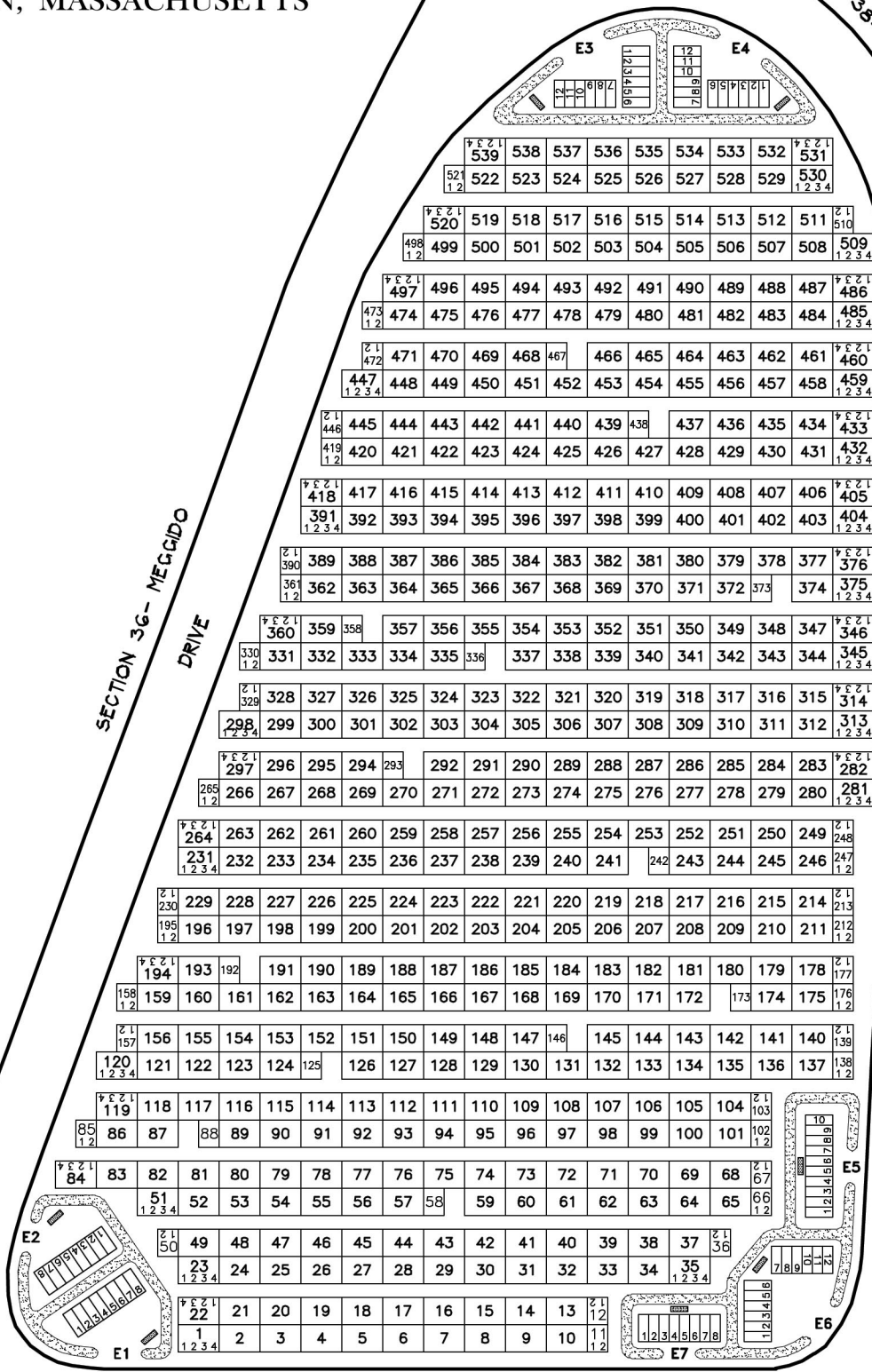


SECTION 35 - SHILOH

RESTING PLACE OF THE ARK OF THE LORD BEFORE BEING BROUGHT TO JERUSALEM

SHARON MEMORIAL PARK

SHARON, MASSACHUSETTS



GREVER & WARD, INC.
CEMETERY PLANNING
3802 N. BUFFALO STREET
ORCHARD PARK, N.Y. 14127
716-662-7700